

## Corporate Member Application

### Main Contact Information

Organization _____	
Name _____	Title _____
Address _____	City, State, ZIP _____
Phone _____	Fax _____
Email _____	Organization Web Site _____

### Corporate Membership Categories & Rates

- Corporate Leader** **\$1,100**
- Recognition as an official sponsor of ACM
  - Listing, link and logo on the online ACM Products & Services List
  - Three free database queries per year, plus one free set of ACM member mailing labels
- Corporate Supporter** **\$700**
- Listing and link on the online ACM Products & Services List
    - Optional Marketing: Include a corporate logo for an additional \$100
  - One free database query per year, plus one free set of ACM member mailing labels
- Self-Employed Consultant** **\$500**
- \*This category is open to individual consultants only. Consulting firms must join as a Corporate Supporter or Corporate Leader.*
- Listing on the online ACM Products & Services List
    - Optional Marketing: Include a corporate logo for an additional \$100
    - Optional Marketing: Include a link to a Web site for an additional \$100
  - One free database query per year

### Calculate Payment

ACM Dues: \$ \_\_\_\_\_ Optional Marketing Feature(s): \$ \_\_\_\_\_ Total Amount: \$ \_\_\_\_\_

*All memberships must be prepaid. Discounts on ACM publications, services and conference registration and access to the ACM Members Only Web site extend to all employees of a Corporate Leader or Corporate Supporter organization. The main contact for a Corporate Membership will receive a subscription to Hand to Hand; additional subscriptions can be purchased at the member rate. ACM dues are annual and rolling based on the date membership dues is first received.*

### Method of Payment

MasterCard    American Express    Visa    Discover    Check (payable Association of Children's Museums)

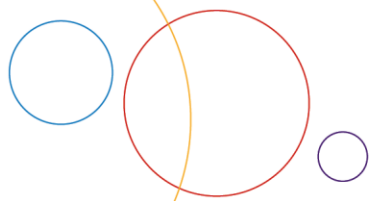
Card Number _____	Expiration Date _____
Name (as it appears on the Card) _____	Authorization Signature _____

### Three Easy Ways to Join

- 1) Fax this form with credit card information to 703-224-3099
- 2) Email this form with credit card information to [Jeannette.Thomas@ChildrensMuseums.org](mailto:Jeannette.Thomas@ChildrensMuseums.org)
- 3) Mail this form, along with payment, to ACM

### Questions?

Contact Jeannette Thomas, program officer, membership: [Jeannette.Thomas@ChildrensMuseums.org](mailto:Jeannette.Thomas@ChildrensMuseums.org) or 703-224-3100.



## Description of Products & Services

The ACM Web site highlights ACM corporate members on the [ACM Products & Services List](#). To be included on this list, new corporate members must provide a description of their products, services, programs or resources.

### Step One: Choose a Products & Services Category

ACM has established product and service categories. Please select up to three categories where you would like your business listed. If none of these categories fit your business services, then you may suggest an appropriate category for ACM consideration in the "Other" section.

- Architecture
- Art and Craft Supplies
- Children's Toys
- Climbing Structures
- Evaluation Services
- Executive Search Services
- Exhibit Design & Fabrication
- Feasibility Experts
- Food Service
- Government Relations
- Graphic Design
- Green Products
- Insurance
- Interactive Museum Products
- Landscape Architecture & Environmental Design
- Leadership
- Management Consultants
- Marketing/Sales
- Playground Equipment
- Software
- Other: \_\_\_\_\_

### Step Two: Create an Online Product Description

Describe the products, services, programs or resources your organization provides. There is a 50-word limit; ACM reserves the right to edit the description for spelling, grammar and point of view.

---

---

---

---

---

---

---

---

---

---

### Step Three: Corporate Logo

If your corporate logo should appear on the ACM Products & Services list, please email the logo in a gif or jpg format to Jeannette Thomas, program officer, membership, at [Jeannette.Thomas@ChildrensMuseums.org](mailto:Jeannette.Thomas@ChildrensMuseums.org).

### Questions?

Contact Jeannette Thomas, program officer, membership: [Jeannette.Thomas@ChildrensMuseums.org](mailto:Jeannette.Thomas@ChildrensMuseums.org) or 703-224-3100.