

Portland Children's Museum





Portland Children's Museum

The mission of the Portland Children's Museum is to inspire imagination, creativity, and the wonder of learning in children and adults by inviting moments of shared discovery.

The Portland Children's Museum is:

- **75,000 sq. ft.** This includes exhibits and studios, offices, storage, Opal School, and the new Center for Children's Learning
- **Located in Portland's Washington Park.** This park also houses the Oregon Zoo, World Forestry Center, International Rose Test Garden, Portland Japanese Garden, Hoyt Arboretum, & Oregon Vietnam Memorial
- **the 6th oldest children's museum in the U.S.** It was founded in 1949.



Portland Children's Museum

The mission of the Portland Children's Museum is to inspire imagination, creativity, and the wonder of learning in children and adults by inviting moments of shared discovery.

- **Hours- 9 a.m. to 5 p.m.**

Closed on Mondays Labor Day to March

First Friday of month free from 5 p.m. to 8 p.m.

- **Admission Prices**

Ages 1-54.....\$7

Ages 55+.....\$6

- **Memberships**

\$80 for 2 adults & 4 children



Portland Children's Museum

The Studios

Included in admission cost
Fee & Free classes and projects

Clay Studio

Drop-in space with ample clay
Firing and glazing available

Wonder Corner

Versatile space for staffed or
unstaffed programming and special
events

The Garage

Recycled arts studio for ages 5+





Portland Children's Museum

The mission of the Portland Children's Museum is to inspire imagination, creativity, and the wonder of learning in children and adults by inviting moments of shared discovery.

Hours

Clay Studio & Wonder Corner: 10:00-4:00 daily

Garage: 10:00-4:00 Fri. Sat. Sun. (during school year)

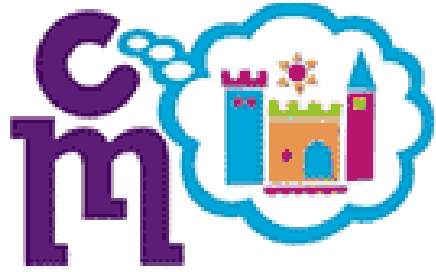
Staffing

Studio Supervisor & Studio Lead

Studio Technician & Studio Guides

Clay Studio & Garage staffed daily

Wonder Corner staffed for weekends & workshops



Portland Children's Museum

Clay Studio





Portland Children's Museum

About the Clay Studio

Free drop-in self guided space

Bring home for \$1 a creation

Pieces may be fired

2 week turn around time

Prices start at \$3

Glazing available

1 week turnaround

Prices start at \$3

Glaze own item or premade piece

Always 1 staff member

Money exchanged in studio

2 Kilns in basement

Fired pieces kept at main entrance



Portland Children's Museum

Wonder Corner

